



NORTHWESTERN STATE

Child Development Associate

You asked and here it is!

Online CDA training by NSU Child and Family Network

What is it?

The online CDA is a self-paced program to meet the training requirements for the Child Development Associate (CDA). It follows a similar organization of 4 courses, 1A, 1B, 2A, and 2B offered by Northwestern State.

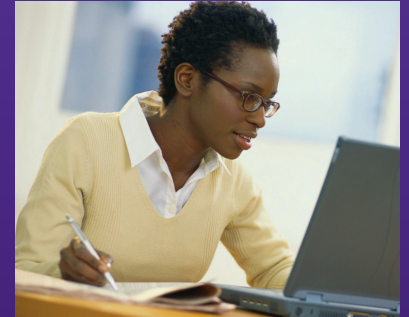
Is it for you?

Do you have convenient access to a computer and skills in using the Internet, email, and basic word processing? Then our new online CDA training may be for you!

Here's what you get:

- An online version of the same textbook, *Working with Young Children* by Judy Herr, and all necessary workbooks and manuals.
- Self-paced, interactive lessons that you complete any time and any place with Internet access.
- Telephone support and assistance with parts that are unclear or computer problems you might encounter related to the course.
- Help with your competency goals, resource file, and preparation for assessment.
- If you are in the region we serve, we will review your materials to be sure you are ready to apply for the CDA.

How does online CDA compare to regular face-to-face CDA training?



Face-to-face:

Book and workbook \$95 (good for all 4 courses)

Meet when the class is scheduled

Often takes more than one year to complete

Tuition \$300-\$400 (depends on early bird)

Total \$395-\$495 (depends on early bird)

Online:

Product Key \$128 (good for all 4 courses)

Work at own pace, when and where you like.

Can complete in one year or less

\$350, paid over a one-year period

Total \$478

How to decide if regular face-to-face or online courses will work best for you:

Do you need deadlines and regular commitments from an outside source?

Then regular face-to-face classes will likely be best for you.

Are you motivated and able to set your personal goals and timelines?

Online may be your preference.

Do you like to work with others and enjoy the interactions with co-learners?

If so, then face-to-face courses may be your best bet.

Do you work well alone?

Online courses may work better if you work well individually.

Do you have little experience in child care?

Face-to-face may be better where more examples can be given.

Here's how to enroll:

- Purchase a Working with Young Children Product Key from the NSU bookstore (318) 677-3047. The cost will be \$128. You will find them in the Shreveport bookstore near the textbooks, Working with Young Children for regular CDA classes. You do not need to purchase the book. This product key is essentially a password code that lets you access the course online. This access is good for one year from the time you first sign on.
- Complete the enrollment form for NSU Child and Family Network and pay the enrollment fee for the course. Other fees will be due according to the guide below.
- You will receive additional information about how the course works. Then just get started!

What does it cost?

- Purchase the Working with Young Children Product Key from the NSU book store \$128.
- Pay an enrollment fee of \$100 (which you may pay in 2 payments of \$50 for Course 1A)
- Then pay another \$100 when you are ready for course 1B (in two payments)
- Pay another \$100 for course 2A (in two payments)
- And finally, \$50 for the last course 2B.

These four segments meet the training requirement for the CDA

You will also need to complete the resource file, observation, CDA competency statements, parent questionnaires, and be assessed by a CDA representative just as in regular classes. But we're here to help you!

Need more information?

Call NSU Child and Family Network at (318) 677-3150



eNSU.nsula.edu

Northwestern State University is accredited by the Commission on Colleges of the Southern Association of Colleges and Schools (1866 Southern Lane, Decatur, Georgia 30033-4097; Telephone number 404-679-4501) to award associate, baccalaureate, master's, and specialist's degrees.

It is the policy of Northwestern State University of Louisiana not to discriminate on the basis of race, color, religion, sex, national origin, age, or disability in its educational programs, activities or employment practices. A full list of disclosures is available on our website, nsula.edu.

